

Annie's
Attic
871621

CROCHET

Halloween Afghan™

Designed by Ruby Gates



Crocheted from worsted yarn, this easy-to-make, easy-to-care-for afghan will delight the spirits and spooks that haunt your house!

Halloween's History

Halloween is an annual celebration, but what is it a celebration of?



The word itself actually has its origins in the Catholic Church, coming from a contraction of All Hallow's Eve. All Hallow's Day, or All Saint's Day, November 1, is a Catholic day of observance in honor of saints.

Legend has it that on that day, the disembodied spirits of all those who had died during the preceding year would come back in search of living bodies to possess for the next year, believed to be their only hope for the afterlife. Naturally, the living did not want to be possessed. On the night of October 31, therefore, villagers would extinguish the fires in their homes, making them cold and undesirable. They would also dress up in ghoulish costumes and parade around the town, being as destructive as possible in order to frighten away spirits looking for bodies to possess.

The custom of trick-or-treating is thought to have originated with a ninth-century European custom called souling. On November 2, All Souls Day, early Christians would walk from village to village begging for "soul cakes," which were made from pieces of bread with currants. The more soul cakes the beggars would receive, the more prayers they would promise to say on behalf of the donor's dead relatives. At the time, it was believed that the dead remained in limbo for a time after death, and that prayer, even by strangers, could hasten a soul's passage to heaven.

Halloween was brought to America in the mid-1800s by Irish immigrants fleeing Ireland's potato famine. At that time, typical pranks included tipping over outhouses and unhinging fence gates.

So even though some groups may have adopted Halloween as their favorite "holiday," the day itself did not grow out of evil practices. It originated with the rituals celebrating a new year and out of prayer rituals, so it is only as evil as one cares to make it.



Swamp Slime

Prepare lime-flavored gelatin according to package instructions. Fill clear plastic cups about $\frac{2}{3}$ full with gelatin and set remainder aside. When the gelatin in the cups begins to solidify, add assorted gummy bugs and worms. Beat the remaining gelatin to a froth and add to the top of the gummy-filled mixture. Let stand until completely set.

Dirt Cups

Prepare instant chocolate pudding according to package instructions. Fill clear plastic cups about $\frac{3}{4}$ full with pudding and imbed a gummy worm or two. Cover the top of the pudding with crushed chocolate cookie crumbs, making sure a worm is peeking out of the crumbs.

Witches' Brew

Prepare blue kool-aid according to package instructions. In a clear punch bowl, mix equal parts kool-aid and lemon-lime soda. Add crushed ice, and continue to add more every half hour or so.



Quickie Costumes

Although there are just about as many different ready-made Halloween costumes as there are kids to wear them, why not create your own from items in your home? Here are a few simple ideas!

Robot: Use a cardboard box with holes cut out for arms and legs and another box for head. Glue aluminum pie plates to front of body box and use light sticks for antennae. Decorate with silver paint or aluminum foil.

Spider: Dress in black leotards and tights. Stuff three pairs of black panty hose with old nylons and stick stuffed hose to waist of leotard. Wear a black stocking cap with black pipe cleaners attached for antennae.

Mummy: Gel hair and brush away from face. Cover face with white makeup. Wrap strips of muslin around entire body, covering completely.

Skeleton: Dress in black leotard and tights. Use white tape or chalk to mark ribs and bones on leotard and tights. Cover face with white makeup, and use black makeup around eyes.

Tourist: Dress in a colorful wild shirt and shorts. Hang several old cameras around neck. Complete outfit with sunglasses, hat, black socks and sandals.



© 1999 Annie's Attic, LLC

All rights reserved. Unauthorized duplication is a violation of applicable laws and may be punishable by fines and/or imprisonment.

1 Annie Lane, Box 2128, Big Sandy, Texas 75755 — www.anniesattic.com

Call 1 (800) LV-ANNIE for a free catalog Call 1 (903) 636-4357 for Pattern Services

Every effort has been made to ensure that these instructions are accurate and complete. We cannot, however, take responsibility for human error, typographical mistakes or variations in individual work.

CROCHET

Halloween Afghan™



Designed by Ruby Gates

FINISHED SIZE:

53½" x 66½"

MATERIALS:

- Worsted yarn:
 - 35 oz. orange
 - 35 oz. black
 - 5 oz. white
- G hook or hook needed to obtain gauge

GAUGE:

4 sc = 1"; 4 sc rows = 1".

BASIC STITCHES:

Ch, sl st, sc, dc.

SPECIAL STITCHES:

For **cluster**, yo, insert hook in corner ch sp, yo, pull lp through, yo, pull through 2 lps on hook, (yo, insert hook in same ch sp, yo, pull through, yo, pull through 2 lps on hook) 2 times, yo, pull through all lps on hook.

For **joining**, ch 1, sc in corresponding ch sp on adjacent piece, ch 1.

NOTES:

For **color change** (see *Stitch Guide*), always change color in last st made, drop unused color to wrong side of work, pick up when needed.

Each square on graph equal on sc.

AFGHAN

Center

Row 1: With orange, ch 127, sc in second ch from hook, sc in each ch across, turn. (126 sc made)

Rows 2–20: Ch 1, sc in each st across, turn.

Rows 21–172: Ch 1, sc in each st across changing colors according to graphs on pages 4 and 5, turn. At end of last row, fasten off.

Rnd 173: Working around entire outer edge, join black with sc in first st, sc in each st across, ch 2, evenly space 174 sc across ends of rows, ch 2; working in starting ch on opposite of row 1, sc in each ch across, ch 2, evenly space 174 sc across ends of rows, ch 2, join with sl st in first sc. (600 sc, 4 ch sps)

Rnds 174–176: Ch 1, sc in each st around with (sc, ch 2, sc) in each corner ch sp, join. At end of last rnd, fasten off. (624)

Rnd 177: Join white with sl st in any corner ch sp, ch 3, (yo, insert hook in same ch sp as sl st, yo, pull lp through, yo, pull through 2 lps on hook) 2 times, yo, pull through all lps on hook (*cluster made*), ch 3, (yo, insert hook in same ch sp as sl st, yo, pull lp through, yo, pull through 2 lps on hook) 3 times, yo, pull through all lps on hook (*cluster made*), (ch 3, dc next 3 sts tog) across to next corner ch sp, ch 3; *(**cluster**—see *Special Stitches*, ch 3, cluster) in corner ch sp,

(ch 3, dc next 3 sts tog) across to next corner ch sp, ch 3; repeat from * around, join with sl st in top of first cluster. Fasten off.

Right Side

Row 1: With black, ch 25, sc in second ch from hook, sc in each ch across, turn. (24 sc made)

Rows 2–6: Ch 1, sc in each st across, turn.

Rows 7–40: Ch 1, sc in each st across changing colors according to graph on page 7, turn.

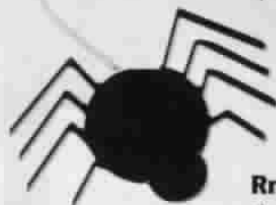
Rows 41–142: Repeat rows 7–40 consecutively.

Rows 143–172: Repeat rows 7–36.

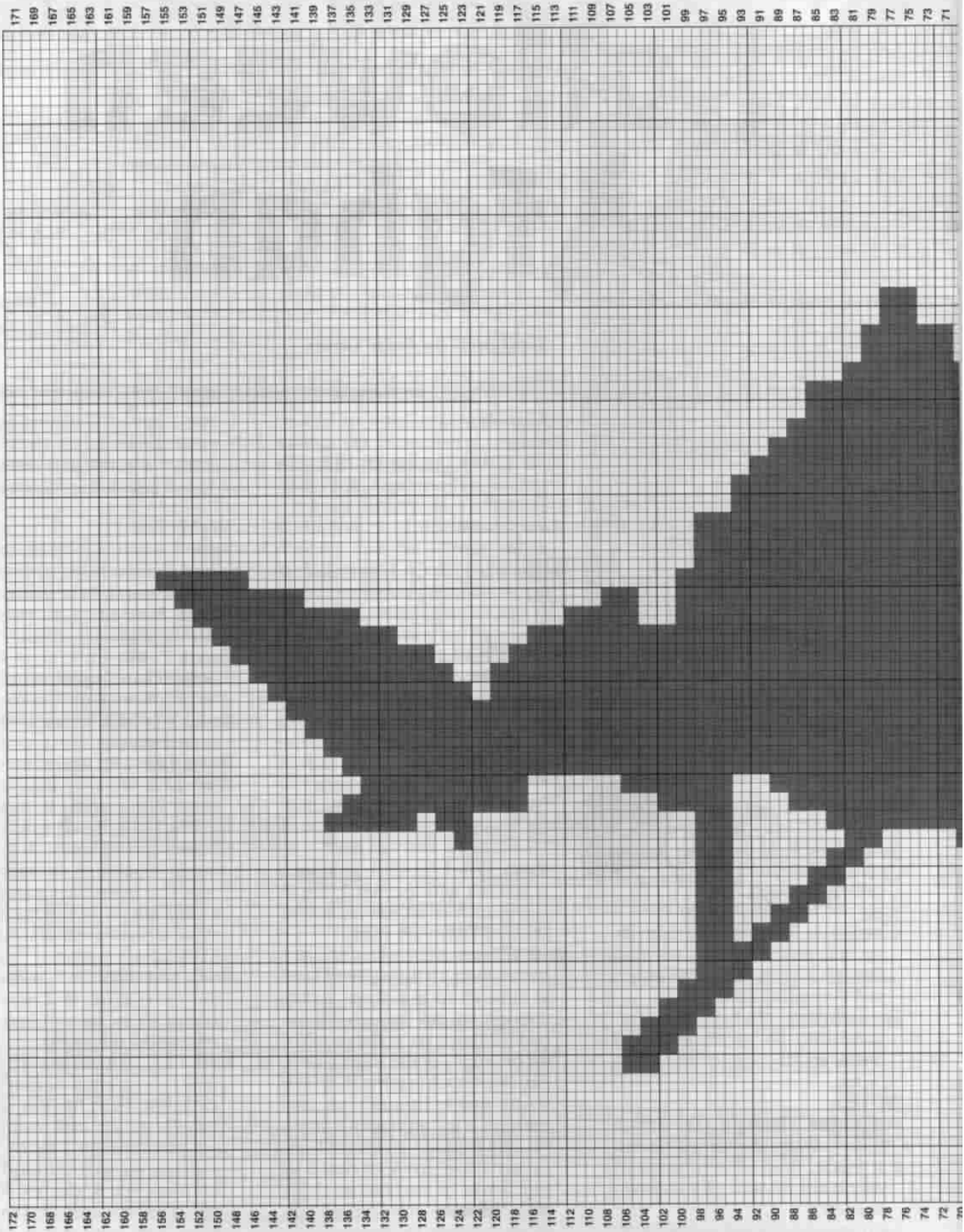
Rnd 173: Working around entire outer edge, ch 1, sc in each st across, ch 2, evenly space 174 sc across ends of rows, ch 2; working in starting ch on opposite of row 1, sc in each ch across, ch 2, evenly space 174 sc across ends of rows, ch 2, join with sl st in first sc. (396 sc)

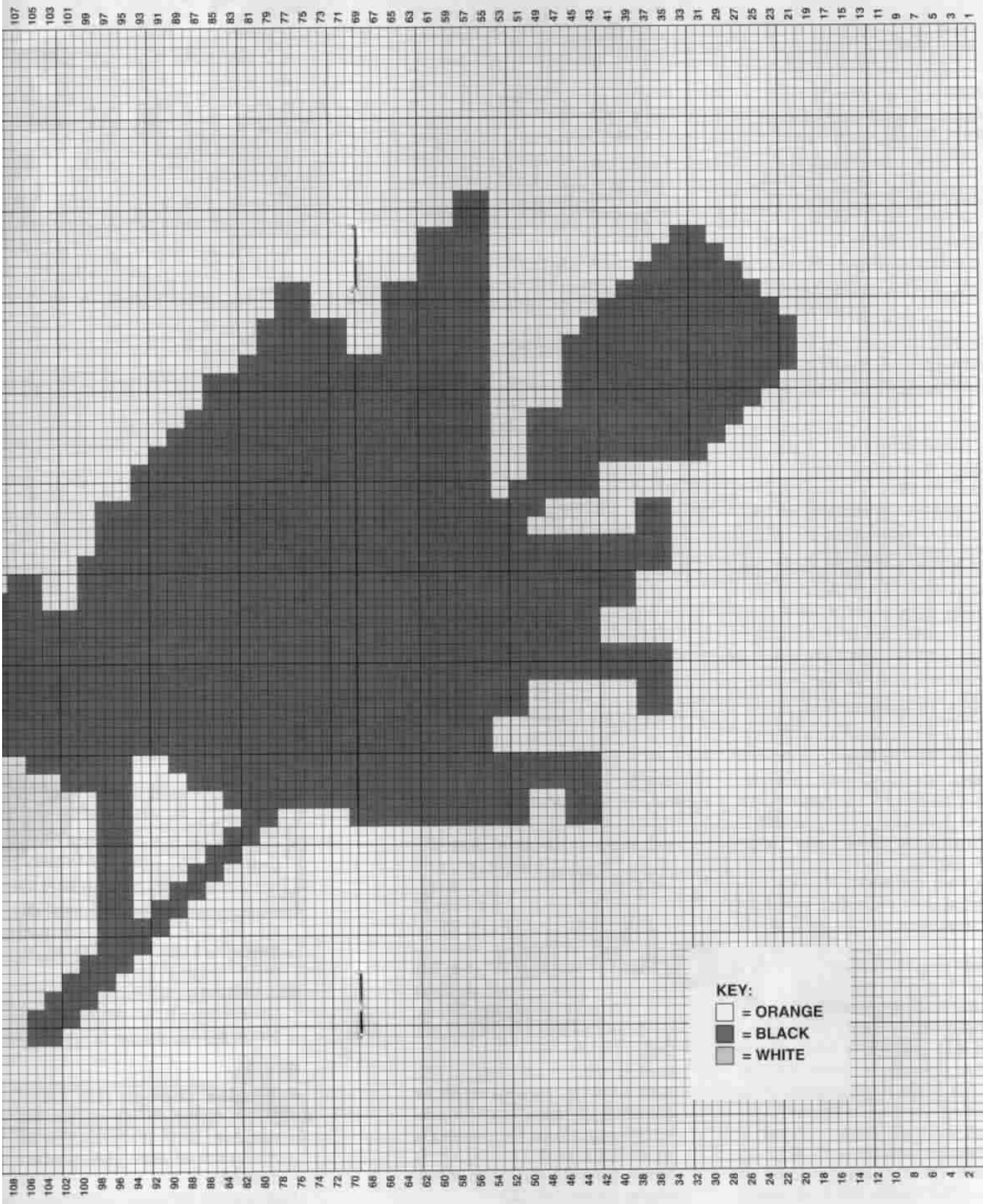
Rnds 174–176: Ch 1, sc in each st around with (sc, ch 2, sc) in each corner ch sp, join. At end of last rnd, fasten off. (420)

Rnd 177: Join white with sl st in lower right-hand corner ch sp, ch 3, (yo, insert hook in same ch sp as sl st, yo, pull lp through, yo, pull through 2 lps on hook) 2 times, yo, pull through all lps on hook, (ch 3, cluster) in same ch sp as first cluster, (ch 3, dc next 3 sts tog) across to next

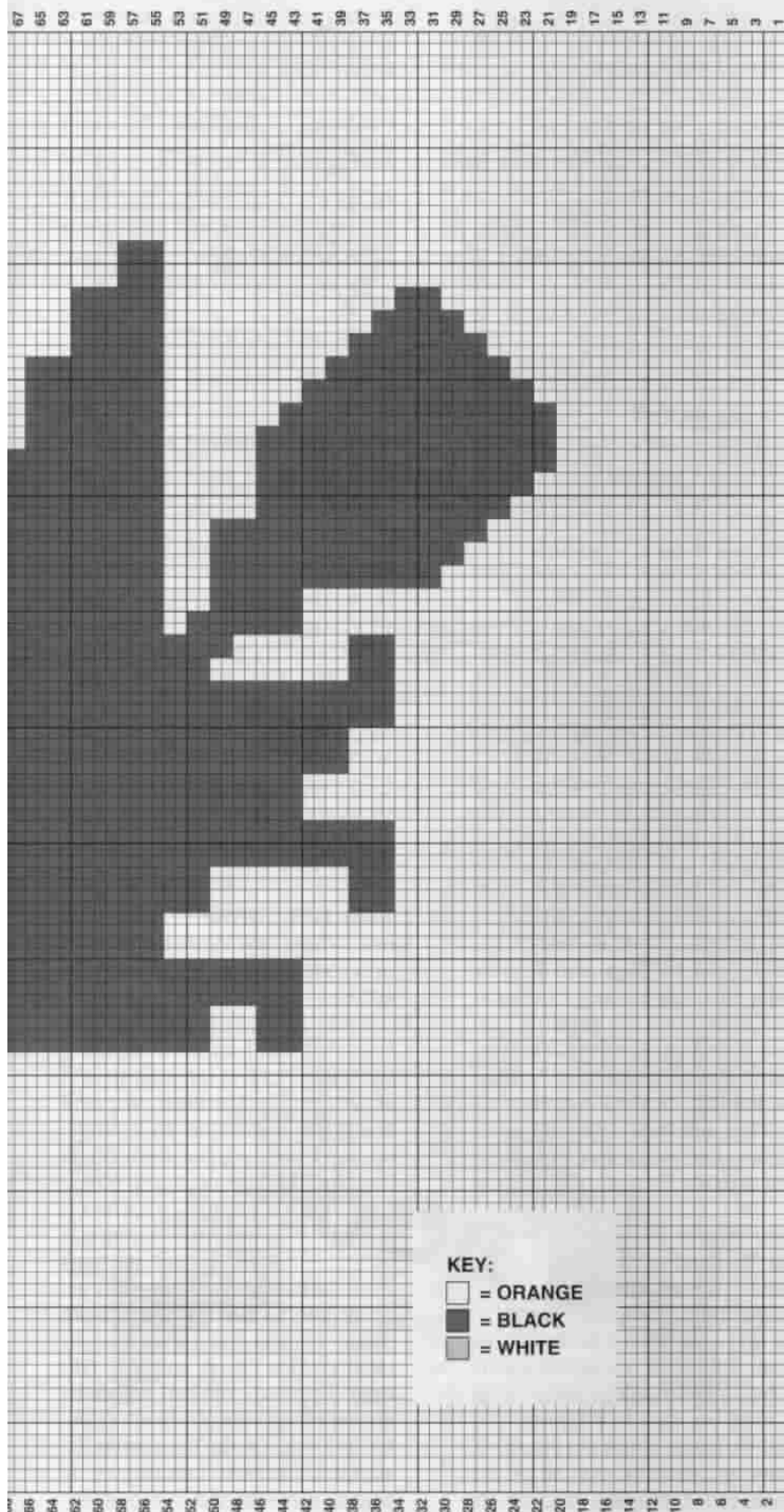


WITCH





KEY:
 □ = ORANGE
 ■ = BLACK
 ▒ = WHITE



corner ch sp, ch 3, (cluster, ch 3, cluster) in corner ch sp, (ch 3, dc next 3 sts tog) across to next corner ch sp, ch 3, (cluster, **joining**—see *Special Stitches*, cluster) in next corner ch sp, joining, (dc next 3 sts tog, joining) across to corner ch sp, (cluster, joining, cluster) in corner ch sp, ch 3, (dc next 3 sts tog, ch 3) across, join with sl st in top of first cluster. Fasten off.

Left Side

Row 1–Rnd 176: Using Left Side graph, work same as Right Side.

Rnd 177: Join white with sl st in upper left-hand corner ch sp, ch 3, (yo, insert hook in same ch sp as sl st, yo, pull lp through, yo, pull through 2 lps on hook) 2 times, yo, pull through all lps on hook, (ch 3, cluster) in same ch sp as first cluster, (ch 3, dc next 3 sts tog) across to next corner ch sp, ch 3, (cluster, ch 3, cluster) in corner ch sp, (ch 3, dc next 3 sts tog) across to next corner ch sp, ch 3, (cluster, joining, cluster) in next corner ch sp, joining, (dc next 3 sts tog, joining) across to corner ch sp, (cluster, joining, cluster) in corner ch sp, ch 3, (dc next 3 sts tog, ch 3) across, join with sl st in top of first cluster. Fasten off.

Top

Row 1: With black, ch 127, sc in second ch from hook, sc in each ch across, turn. (126 sc made)

Rows 2–6: Ch 1, sc in each st across, turn.

Rows 7–36: Ch 1, sc in each st across changing colors according to graph on page 7, turn.

Rnd 37: Working around entire outer edge, ch 1, sc in each st across, ch 2, sc in end of each row across, ch 2; working in starting ch on opposite side of row 1, sc in each ch across, ch 2, sc in end of each row across, ch 2, join with sl st in first sc. (324)

Rnds 38–40: Ch 1, sc in each st around with (sc, ch 2, sc) in each corner ch sp, join. At end of last rnd, fasten off. (348)



Rnd 41: Join white with sl st in upper right-hand corner ch sp, ch 3, (yo, insert hook in same ch sp as sl st, yo, pull lp through, yo, pull through 2 lps on hook) 2 times, yo, pull through all lps on hook, (ch 3, cluster) in same ch sp as first cluster, (ch 3, dc next 3 sts tog) across to next corner ch sp, ch 3, (cluster, ch 3, cluster) in corner ch sp, (ch 3, dc next 3 sts tog) across to next corner ch sp, ch 3, (cluster, joining, cluster) in next corner ch sp, joining, (dc next 3 sts tog, joining) across to corner ch sp, (cluster, joining, cluster) in corner ch sp, ch 3, (dc next 3 sts tog, ch 3) across, join with sl st in top of first cluster. Fasten off.

Bottom

Row 1–Rnd 40: Work same rows and rnds of Top.

Rnd 41: Join white with sl st in lower left-hand corner ch sp, ch 3, (yo, insert hook in same ch sp as sl st, yo, pull lp through, yo, pull through 2 lps on hook) 2 times, yo, pull through all lps on hook, (ch 3, cluster) in same ch sp as first cluster, (ch 3, dc next 3 sts tog) across to next corner ch sp, ch 3, (cluster, ch 3, cluster) in corner ch sp, (ch 3, dc next 3 sts tog) across to next corner ch sp, ch 3, (cluster, joining, cluster) in next corner ch sp, joining, (dc next 3 sts tog, joining) across to corner ch sp, (cluster, joining, cluster) in corner ch sp, ch

3, (dc next 3 sts tog, ch 3) across, join with sl st in top of first cluster. Fasten off.

BAT A

Upper Right Corner

Row 1: With orange, ch 25, sc in second ch from hook, sc in each ch across, turn. (24 sc made)

Rows 2–6: Ch 1, sc in each st across, turn.

Rows 7–36: Ch 1, sc in each st across changing colors according to Bat A graph on page 7, turn. At end of last rnd, fasten off.

Rnd 37: Join black with sc in first st, sc in each st across, ch 2, sc in end of each row across, ch 2; working in starting ch on opposite side of row 1, sc in each ch across, ch 2, sc in end of each row across, join with sl st in first sc. (120)

Rnds 38–40: Ch 1, sc in each st around with (sc, ch 2, sc) in each corner ch sp, join. At end of last rnd, fasten off. (144)

Rnd 41: Join white with sl st in upper right-hand corner ch sp, ch 3, (yo, insert hook in same ch sp as sl st, yo, pull lp through, yo, pull through 2 lps on hook) 2 times, yo, pull through all lps on hook, (ch 3, cluster) in same ch sp as first cluster, (ch 3, dc next 3 sts tog) across to next corner ch sp, ch 3; join to **Top** and **Right Side**, *(cluster, joining, cluster) in next corner ch sp, joining, (dc next 3 sts tog, joining) across to corner ch sp; repeat from *, (cluster, joining, cluster) in corner ch sp, ch 3, (dc next 3 sts tog, ch 3) across, join with sl st in top of first cluster. Fasten off.

Lower Right Corner

Row 1–Rnd 40: Work same rows and rnds as Upper Right Corner on Bat A.

Rnd 41: Join white with sl st in lower right-hand corner ch sp, ch 3, (yo, insert hook in same ch sp as sl st, yo, pull lp through, yo, pull through 2 lps on hook) 2 times, yo, pull through all lps on hook, (ch 3, cluster) in same ch sp as first cluster, (ch 3, dc next 3

sts tog) across to next corner ch sp, ch 3; join to **Right Side** and **Bottom**, *(cluster, joining, cluster) in next corner ch sp, joining, (dc next 3 sts tog, joining) across to corner ch sp; repeat from *, (cluster, joining, cluster) in corner ch sp, ch 3, (dc next 3 sts tog, ch 3) across, join with sl st in top of first cluster. Fasten off.

BAT B

Upper Left Corner

Row 1–Rnd 40: Using Bat B graph, work same rows and rnds as Bat A.

Rnd 41: Join white with sl st in upper left-hand corner ch sp, ch 3, (yo, insert hook in same ch sp as sl st, yo, pull lp through, yo, pull through 2 lps on hook) 2 times, yo, pull through all lps on hook, (ch 3, cluster) in same ch sp as first cluster, (ch 3, dc next 3 sts tog) across to next corner ch sp, ch 3; join to **Left Side** and **Top**, *(cluster, joining, cluster) in next corner ch sp, joining, (dc next 3 sts tog, joining) across to corner ch sp; repeat from *, (cluster, joining, cluster) in corner ch sp, ch 3, (dc next 3 sts tog, ch 3) across, join with sl st in top of first cluster. Fasten off.

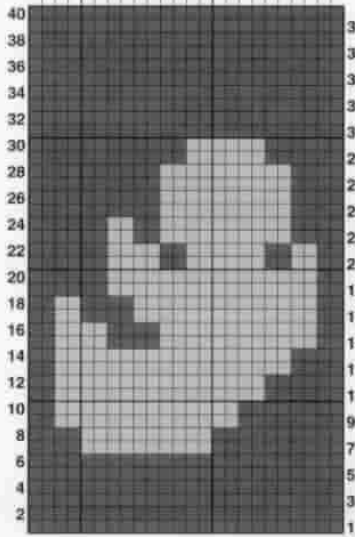
Lower Left Corner

Row 1–Rnd 40: Work same rows and rnds as Upper Left Corner on Bat B.

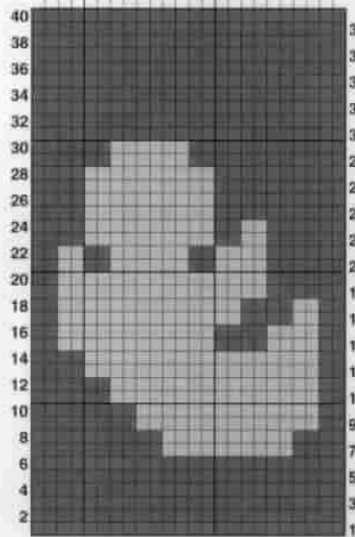
Rnd 41: Join white with sl st in lower left-hand corner ch sp, ch 3, (yo, insert hook in same ch sp as sl st, yo, pull lp through, yo, pull through 2 lps on hook) 2 times, yo, pull through all lps on hook, (ch 3, cluster) in same ch sp as first cluster, (ch 3, dc next 3 sts tog) across to next corner ch sp, ch 3; join to **Bottom** and **Left Side**, *(cluster, joining, cluster) in next corner ch sp, joining, (dc next 3 sts tog, joining) across to corner ch sp; repeat from *, (cluster, joining, cluster) in corner ch sp, ch 3, (dc next 3 sts tog, ch 3) across, join with sl st in top of first cluster. Fasten off. □□

BOO!

LEFT SIDE



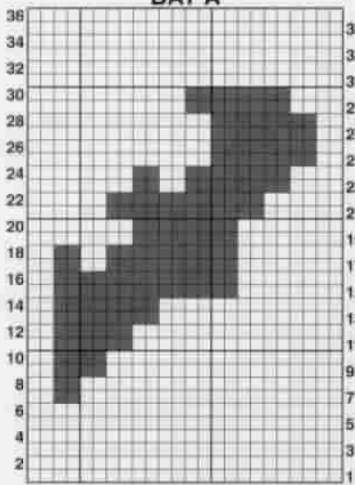
RIGHT SIDE



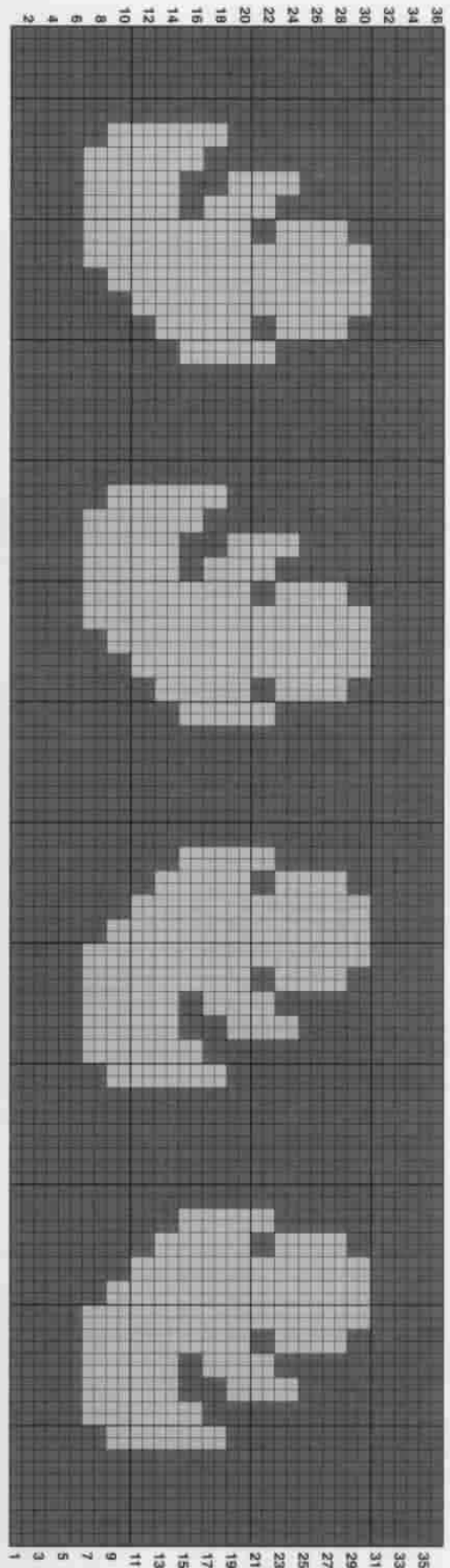
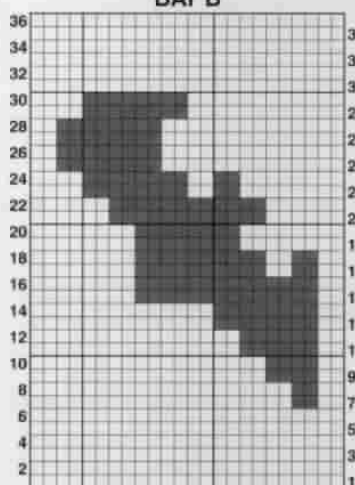
KEY:

- = ORANGE
- = BLACK
- = WHITE

BAT A



BAT B



TOP/BOTTOM

Stitch Guide

STANDARD ABBREVIATIONS

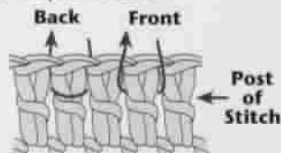
begbeginning
ch, chschain, chains
dcdouble crochet
decdecrease
hdchalf double crochet
incincrease
lp, lpsloop, loops
rnd, rndsround, rounds
scsingle crochet
sl stslip stitch
sp, spsspace, spaces
st, stsstitch, stitches
togtogether
trtreble crochet
yoyarn over

sc next 2 sts tog(insert hook in next st, yo, pull through st) 2 times, yo, pull through all 3 lps on hook.

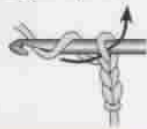
hdc next 2 sts tog(yo, insert hook in next st, yo, pull through st) 2 times, yo, pull through all 5 lps on hook.

dc next 2 sts tog(yo, insert hook in next st, yo, pull through st, yo, pull through 2 lps on hook) 2 times, yo, pull through all 3 lps on hook.

Front post stitch—fp:
Back post stitch—bp: When working post st, insert hook from right to left around post of st on previous row.



Chain—ch: Yo, pull through lp on hook.



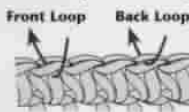
Slip stitch—sl st: Insert hook in st, yo, pull through both lps on hook.



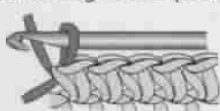
Single crochet—sc: Insert hook in st, yo, pull through st, yo, pull through both lps on hook.



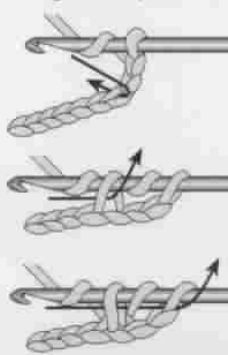
Front loop—front lp:
Back loop—back lp:



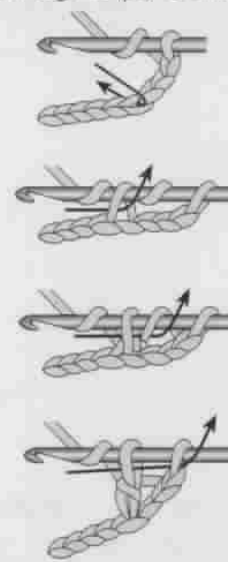
Change colors: Drop first color; with second color, pull through last 2 lps of st.



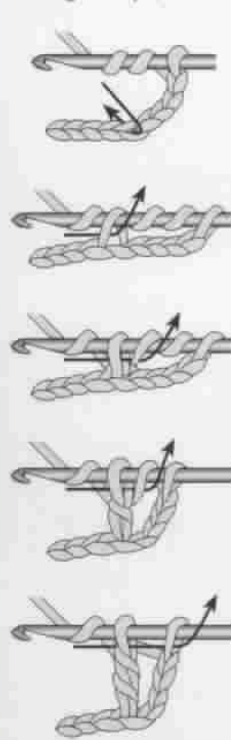
Half double crochet—hdc: Yo, insert hook in st, yo, pull through st, yo, pull through all 3 lps on hook.



Double crochet—dc: Yo, insert hook in st, yo, pull through st, (yo, pull through 2 lps) 2 times.



Treble crochet—tr: Yo 2 times, insert hook in st, yo, pull through st, yo, pull through 2 lps) 3 times.



Double treble crochet—dtr: Yo 3 times, insert hook in st, yo, pull through st, (yo, pull through 2 lps) 4 times.



The patterns in this book are written using American crochet stitch terminology. For our international customers, hook sizes, stitches and yarn definitions should be converted as follows:

US	=	UK
sl st (slip stitch)	=	sc (single crochet)
sc (single crochet)	=	dc (double crochet)
hdc (half double crochet)	=	htr (half treble crochet)
dc (double crochet)	=	tr (treble crochet)
tr (treble crochet)	=	dtr (double treble crochet)
dtr (double treble crochet)	=	ttr (triple treble crochet)
skip	=	miss

THREAD/YARNS	
Bedspread Weight	= No. 10 Cotton or Virtuoso
Sport Weight	= 4 Ply or thin DK
Worsted Weight	= Thick DK or Aran

MEASUREMENTS

1"	= 2.54 cm
1 yd.	= .9144 m
1 oz.	= 28.35 g

But, as with all patterns, test your gauge (tension) to be sure.

CROCHET HOOKS

Metric	US	Metric	US
.60mm	14	3.00mm	D/3
.75mm	12	3.50mm	E/4
1.00mm	10	4.00mm	F/5
1.50mm	6	4.50mm	G/6
1.75mm	5	5.00mm	H/8
2.00mm	B/1	5.50mm	I/9
2.50mm	C/2	6.00mm	I/10

EDITORIAL DIRECTOR—Andy Atkley
PRODUCTION AND PHOTOGRAPHY DIRECTOR—Ange Van Arman
DESIGN DIRECTOR—Marilyn Shelton
DESIGN STAFF—Mickie Akins, Sandy Kennebeck, Alice Vaughan, Ann White
SENIOR EDITOR—Jennifer McClain / **PROJECT EDITOR**—Shirley Brown
EDITORIAL STAFF—Liz Field, Skeeter Gilson, Nina Marsh, Shelley Riley, Donna Scott
PHOTOGRAPHY STAFF—Scott Campbell, Tammy Coquat-Payne, Martha Coquat
LAYOUT ARTIST—Cherie Pendley / **COVER DESIGN**—Minette Smith
EDITORIAL COPY PRESENTATION—Diane Simpson
PRODUCTION COORDINATOR—Glenda Chamberlain

PRINTED IN U.S.A.



www.anniesattic.com