



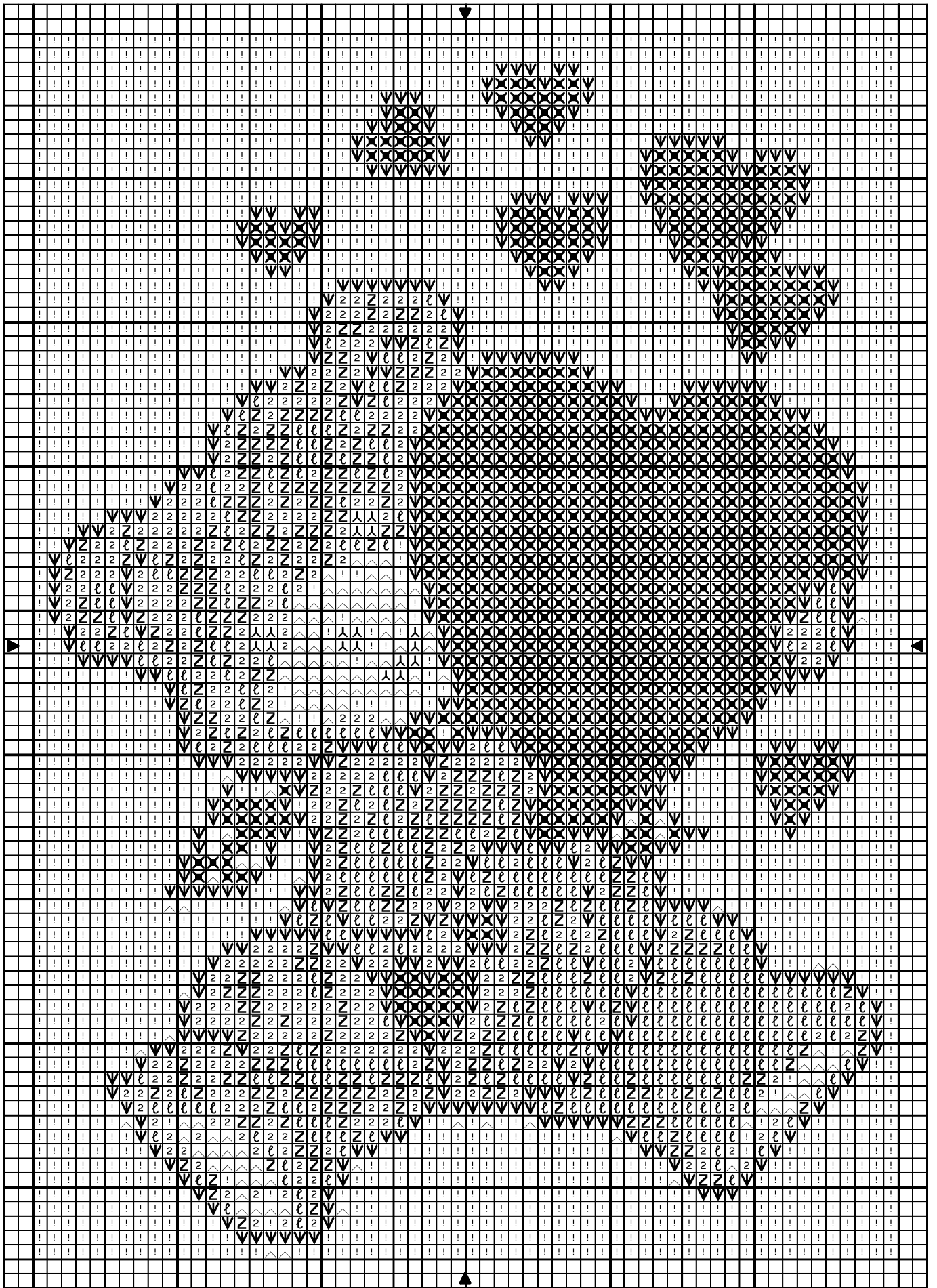
*Finished cross stitch picture*



*Original picture*



Valentine Teddy bear



Valentine Teddy bear

		DMC
人	Black	310
X	Red orange	606
ℓ	Tangerine orange	741
Z	Light tangerine	742
z	Medium yellow	743
V	Garnet red	902
^	Ivory	3823
!	Bright white	B5200

Stitch Count 60 x 85

Design Area 10.9 x 15.4 cm at 55 sts per 10cm

Note: Pattern is made for 14 count aida

Design By: Yiotas XStitch

Copyright © By: Yiotas XStitch



### **\*\*\* INSTRUCTIONS \*\*\***

This cross stitch chart/pattern has no quarter or half stitches, no metallic threads, no beads, just full stitches. There are several pages for this chart/pattern. You will need to lay out all pages and it should look something like this:

Page 1	Page 2	Page 3
Page 4	Page 5	Page 6
Page 7	Page 8	Page 9

At the bottom left side there is a small box that tells you which page of the whole chart you are looking at. This should make it easier to put together and lay out the pages.

Once you have your pages layed out, look for the center arrow. There is a small arrow on one of the top row pages, then another small arrow on the left middle page. Follow these 2 arrows until the intercept. This should be your first stitch on your design.

Visit [http://yiotas-xstitch.com/osCommerce/Calculator\\_Conversion.php](http://yiotas-xstitch.com/osCommerce/Calculator_Conversion.php) for:

1. Cross stitch calculator
2. Stitches to inches
3. DMC floss color chart
4. Floss conversion calculator

#### **1. Cross stitch calculator:**

It will tell you stitched size, and suggests fabric size, needle, and number of strands of floss

#### **2. Stitches to inches:**

Use this chart to determine the finished size of a design for various fabric counts. Find the stitch count of the fabric on the top line. Find the number of stitches for the design at the right. The stitched size is the intersection.

#### **3. DMC floss color chart:**

This will give you a color picture of the DMC floss colors arranged in color families (not by color number). The picture comes from a DMC thread color book. Although not exact, the colors are fairly accurate. Remember that the colors you will see depend greatly on the quality and calibration of your computer screen. The picture does not include the 27 new colors added early 2002.

This color chart is handy if you want to change colors in a chart. For example, say you want to change part of a design from red to blue. The red in the design has shadowing (red with 2 shades of darker red to create the shadow or texture). An easy way to convert to blues would be to pick all the shades of blue from the same family.

#### **4. Floss conversion calculator:**

Use this calculator to convert multiple floss codes from Bucilla, Dimensions, J & P Coats, Anchor, and DMC to any of the others.

#### **Free cross stitch charts/patterns:**

As a gratitude to your custom, I would like to offer you free cross stitch charts/patterns to download and print from your computer. Please visit: [www.yiotas-xstitch.com](http://www.yiotas-xstitch.com) and click on the the category "Free charts".

\*~\*Thank you for shopping from Yiotas XStitch shop. Please come again soon.\*~\*